



<mailto:atlantic@powerplantsupplyco.com>

## **SERIES CVI – INSERTABLE DUCKBILL CHECKVALVE**

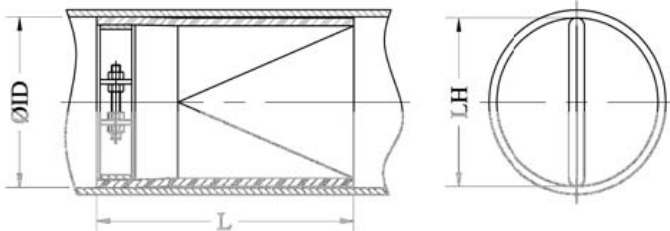
Contact Power Plant Supply Co for product selection and pricing

Valve Series CVI In-Line Check Valves are designed to fit right inside the pipe. No valve body is required. This feature not only saves money but also permits installation in otherwise difficult situations such as tank outlets, floor drains, sewer interceptors, overflow systems, retention basins and manhole outlets.

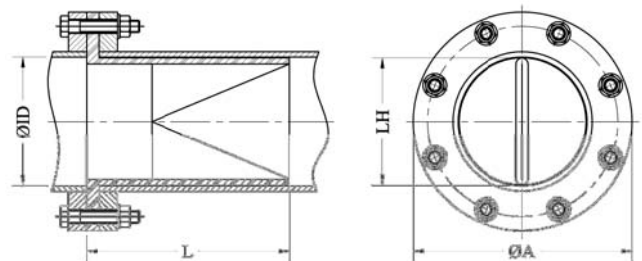
**Series CVI-E** fits directly inside the pipe and is secured in place by a stainless steel expandable clamp ring.

**Series CVI-F** also fits directly inside the pipe and is bolted in place between the pipe flanges.

### **Fuller Series CVI-E**



### **Fuller Series CVI-F**



<http://www.powercanadasolutions.com/checkvalves.html>

Canada Distributor Power Plant Supply Co

Ontario: 416 752 3339 Atlantic/Quebec: 902 435 9899 NL: 709 747 7650

For sizing & pricing: <mailto:atlantic@powerplantsupplyco.com>