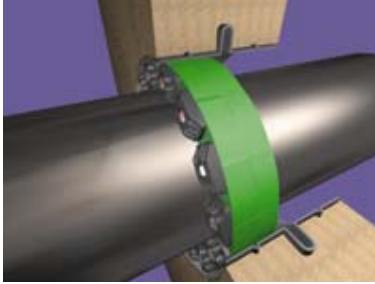


Mechanical Pipe Penetrations Seals

Link-Seal® Mechanical Seals



Link-Seal® mechanical seals are considered to be the premier method for permanently sealing pipes of any size passing through walls, floors and ceilings. In fact, any cylindrical object may be quickly, easily and permanently sealed, as they pass through barriers, by the patented Link-Seal design.

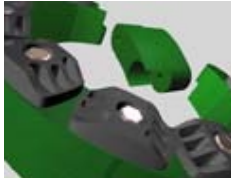
Ductile iron, concrete, metal as well as plastic pipes may be hydrostatically sealed within walls to hold up to 20 psig (40 feet of head). Electrical or telecommunications cables may be sealed within conduit as they enter vaults or manholes. The annular space between carrier pipes passing through casings may be sealed against the entry of water, soil or backfill material.

With a wide variety of hardware/ elastomer combinations, Link-Seal mechanical seals are easily configured to achieve the best possible match for service conditions encountered.

Black (EPDM)



Green (Nitrile)



Gray (Silicone)



Features

Saves time and money...

Link-Seal mechanical seals install in up to 75% less time compared to lead-oakum joints, hand fitted flashings, mastics or casing boots.

Positive hydrostatic seal...

Link-Seal mechanical seals are rated at 20 psig (40 feet of head), which exceeds the performance requirements of most applications.

Long seal life...

Link-Seal mechanical seals are designed for use as a permanent seal. Seal elements are specially compounded to resist aging and attack from ozone, sunlight, water and a wide range of chemicals.

Maximum protection against corrosion...

Standard fasteners with a two-part organic resin coating or corrosion resistant 316 stainless steel.

Certification/Approvals...

Factory Mutual Fire Approvals. Det Norske Veritas Marine Deck/Bulkhead Penetration Certification. ANI (American Nuclear Insurers). Also a wide variety of approvals from various Federal agencies, associations, code groups, laboratories and organizations.

ISO Quality Assurance...

Link-Seal mechanical seals are manufactured in an ISO 9002 certified facility.

Configure a Link-Seal to match your application...

Color coded EPDM, Nitrile, & Silicone elastomers may be used with various hardware options to match performance characteristics with service conditions.

Visit Power Plant Supply web fill in our quote for pricing FOB you project site

<http://www.powercanadasolutions.com/linkseal.html>

902 435 9899 – 416 752 7637

Available Link Seals, Wall Sleeves, for DI pipe, HDPE pipe, PVC pipe, including DR18, Dr35, SDR, and Steel pipe. In Canada, from our Canadian warehouse locations Power Plant Supply Co, serve customers in Ontario, ON, Quebec, QC, Nunavut, Northwest Territories, NWT, and Yukon. We supply customers in Atlantic Canada including New Brunswick, NB, PEI, Nova Scotia, NS, Newfoundland and Labrador, NL. We ship same day in Toronto, GTA. We also ship to, British Columbia, BC, Alberta, AB, Saskatchewan, Manitoba; Man, including cities Vancouver, Calgary, Fort McMurray, Edmonton, Regina, Winnipeg, Thunder Bay, Churchill, Hamilton, Ottawa, Montreal, Quebec City, Saint John, Fredericton, Moncton, Halifax, Charlottetown, Sydney, ST John's.