



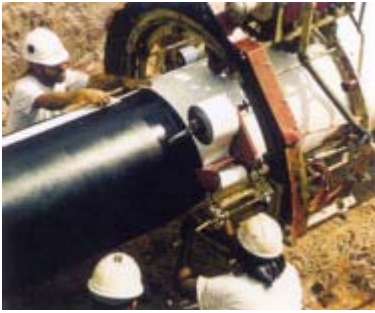
POWER PLANT SUPPLY CO

ATLANTIC/North & East Quebec: 902 435 9899 / 709 747 7650

ONTARIO/Western Canada 416 752 3339

<http://www.powercanadasolutions.com/heatshrink.html>

<mailto:atlantic@powerplantsupplyco.com>



POLYKEN®

Primer/Liquid 1027 Adhesive System

Base: Rubber/Resins

Solvent: V. M. & P Naptha

Flash Point: 40 °F (-4 °C)

Total Solids: 30%

Coverage Area: Varies

Shelf Life: 3 Years from DOM

Weight Per Gallon: 7.1 lb/gal (0.86 kg/L)

Caution: Extremely Flammable.

Power Plant Supply Co has convenient shipping warehouse locations in Canada, to serve customers in Ontario, ON, Quebec, QC, Atlantic Canada, including New Brunswick, NB, PEI, Nova Scotia, NS, Newfoundland & Labrador, NL, British Columbia, BC, Alberta, AB, Manitoba, Man, Saskatchewan, SK, Nunavut, Northwest Territories, NWT, Yukon. Next day Air or convenient ground to major cities including Vancouver, Calgary, Edmonton, Fort McMurray, Winnipeg, Yellowknife, Thunder Bay, Hamilton, Toronto, Ottawa, Montreal, Quebec City, Saint John, Moncton, Fredericton, Charlottetown, Halifax, Sydney, Corner Brook, St John's

Material Safety Data Sheet

SECTION I - IDENTIFICATION

PRODUCT NAME: POLYKEN® 1027 LIQUID ADHESIVE
CHEMICAL FAMILY: Petroleum hydrocarbon
DOT ID NO.: UN1139 (Coating Solution)
HAZARD CLASS: Flammable Liquid (IMO Class 3.0; WHMIS Class B, Division 2)

EMERGENCY TELEPHONE NUMBER: CHEMTREC 1-800-424-9300
OTHER TECHNICAL/HEALTH/SAFETY INFORMATION: (781) 372-2200

SECTION II - HAZARDOUS INGREDIENTS/IDENTITY INFORMATION

	CAS REG. NO.	AMOUNT EXPOSURE LIMITS*
VM&P NAPHTHA	8032-32-4	Approx. 60% 300 ppm TWA, 400 STEL
TOLUENE	108-88-3	Approx. 12% 100 ppm TWA, 150 STEL
METHANOL	67-56-1	Approx. 1.5% 200 ppm TWA, 250 STEL

* OSHA 29 CFR 1910.1000, 8-hour Time Weighted Average and Short Term Exposure Limits.

SECTION III - PHYSICAL/CHEMICAL INFORMATION

BOILING POINT: 230-278° F	VAPOR DENSITY (Air = 1): 4*
pH: Neutral	VAPOR PRESSURE: 45 mm Hg (75°F)*
SPECIFIC GRAVITY: 1.03	WATER SOLUBILITY: Negligible
FREEZING POINT: below 0°F	EVAPORATION RATE (BuAc=1): 2*
VISCOSITY: 56 cP	VOC: 4.9 lbs/gal

APPEARANCE AND ODOR: Black, viscous liquid with odor of hydrocarbon solvents. Odor threshold 10-15 ppm for Toluene, <300 ppm for VM&P Naphtha.

* Based on VM&P Naphtha (most volatile component)

SECTION IV - FIRE & EXPLOSION HAZARD DATA

FLASH POINT: 40° F (Pensky-Martens)
AUTOIGNITION TEMPERATURE: Approximately 480° F (VM&P Naphtha)
LEL: 1.2 % **UEL:** 7.1%
EXTINGUISHING MEDIA: Foam, CO₂, Dry Chemical, water fog or spray.
SPECIAL FIRE FIGHTING PROCEDURES: If only water is available, use spray and not a direct hose stream. Isolate hazard area and do not permit unnecessary personnel to enter. Avoid breathing fumes or vapors. Wear full protective clothing, including NIOSH approved self contained breathing apparatus. Cool surrounding areas and exposed containers with water.
UNUSUAL FIRE & EXPLOSION HAZARDS: This material is a moderate explosion hazard and a dangerous fire hazard when exposed to heat and flame, due mostly to its flammable solvent content.

SECTION V - REACTIVITY DATA

STABILITY: Stable under most conditions. Avoid high temperatures, sparks, open flame.

INCOMPATIBILITY (Materials to avoid): Strong oxidizing agents such as liquid chlorine, pure oxygen, sodium hypochlorite, and calcium hypochlorite.

HAZARDOUS DECOMPOSITION PRODUCTS: Carbon monoxide and complex organic hydrocarbons may be formed upon combustion.

HAZARDOUS POLYMERIZATION: Will not occur.

SECTION VI - HEALTH HAZARD DATA

THRESHOLD LIMIT VALUE: Not determined for mixture; 100 ppm for Toluene; 300 ppm for VM&P Naphtha. 200 ppm for Methanol

COMPONENTS LISTED AS KNOWN OR POTENTIAL CARCINOGENS: None.

MEDICAL CONDITIONS GENERALLY AGGRAVATED BY EXPOSURE: None known.

ACUTE EFFECTS OF OVEREXPOSURE:

INHALATION: May be irritating to mucous membranes. Inhalation of vapors may lead to giddiness, dizziness, nausea, and loss of consciousness.

SKIN CONTACT: May be mildly irritating to the skin. Prolonged or repeated exposure may result in defatting of skin, possibly leading to dermatitis.

EYE CONTACT: Short-term exposure may lead to irritation.

NOTE: Wearing contact lenses is not recommended when using this product.

INGESTION: Ingestion of the liquid may lead to vomiting.

CHRONIC EFFECTS OF OVEREXPOSURE: None known.

EMERGENCY & FIRST AID PROCEDURES:

INHALATION: Move affected person to fresh air and provide oxygen if breathing is difficult. Give artificial respiration if necessary. Seek medical advice.

SKIN CONTACT: Flush with water, then wash affected area with soap and water. Remove contaminated clothing immediately and launder before reuse. If irritation develops, seek medical advice.

EYE CONTACT: Flush with water for at least 15 minutes and seek medical advice.

INGESTION: DO NOT INDUCE VOMITING! If vomiting occurs spontaneously, keep head below hips to prevent aspiration of liquid into lungs. Seek medical advice.

TOXICITY INFORMATION:

VM&P NAPHTHA ihl-hmn TCLo 600 mg/m³/8H oral-rat LD50 >5000 mg/kg

TOLUENE ihl-hmn TCLo 200 ppm, ihl-mul LC50 5320 ppm/8H

SECTION VII - PRECAUTIONS FOR SAFE HANDLING AND USE

STEPS TO BE TAKEN IN CASE MATERIAL IS RELEASED OR SPILLED: DANGER!

FLAMMABLE! Eliminate all ignition sources. Handling equipment must be grounded to prevent sparking.

LARGE SPILLS: Isolate the hazard area and keep unnecessary personnel away. Wear NIOSH-approved protective clothing and self-contained breathing apparatus. Ventilate area. Confine free liquid by diking and remove liquid with explosion-proof vacuum truck or pump to chemical storage vessel. Soak up residue with inert absorbent material such as clay or sand; place in leak-free container, label as to contents, and hold for proper disposal. Dispose of spill material according to applicable regulations.

DO NOT ALLOW MATERIAL TO ENTER SEWERS OR WATER COURSES LEADING TO SURFACE WATERS.

SMALL SPILLS: Take up with inert absorbent materials and place in non-leaking containers; label as to contents; seal tightly for proper disposal.

WASTE DISPOSAL: Dispose of material according to RCRA regulations. RCRA Number for Toluene is U220. D001 designates ignitable mixtures not specifically covered by another RCRA Number.

PRECAUTIONS FOR HANDLING AND STORING: Do not store in excessive heat so as to avoid pressure buildup in containers. Keep liquid away from very intense heat sources to eliminate decomposition into toxic products. Avoid inhalation of vapors and excessive or repeated skin contact.

SECTION VIII - CONTROL MEASURES

VENTILATION REQUIREMENT: Local or mechanical explosion-proof.

RESPIRATORY PROTECTION: If exposure exceeds, or there is a possibility that it may exceed OSHA exposure limits (200 ppm for Toluene; 300 ppm for VM&P Naphtha), use NIOSH approved respirators. At extreme exposure levels, use self-contained breathing apparatus.

PROTECTIVE GLOVES: Chemically impervious.

EYE PROTECTION: Goggles.

OTHER PROTECTIVE EQUIPMENT: Chemical impervious clothing to prevent skin contact.

SECTION IX - SPECIAL PRECAUTIONS

PRECAUTIONS TO BE TAKEN IN HANDLING AND STORING: Do not handle or store near heat, sparks, flame or strong oxidizers. Adequate ventilation required. Avoid breathing vapors; avoid prolonged or repeated skin contact.

NOTE: FLAMMABLE LIQUID LABEL REQUIRED!

REVISED DATE: June 23, 2008

SUPERCEDES: All previous versions

The information presented herein was prepared at *Berry Plastics* (R&D Laboratory, 17 Hartwell Avenue, Lexington, MA 02421) by qualified technical personnel, and to our knowledge it is true and accurate. The information and recommendations are furnished for this product with the understanding that the purchaser will independently determine the suitability of the product for his purpose. The data do not constitute a warranty, expressed or implied, statutory or otherwise, nor are they a representation for which *Berry Plastics* assumes legal responsibility. The data are submitted for the user's information and consideration only. Any use of this product must be determined by the user to be in accordance with the applicable federal, state, and local laws and regulations.

Franklin, MA USA
Tel: +1 508-918-1714
US Toll Free: +1 800-248-0149
Fax: +1 508-918-1910
E-mail: CPG@berryplastics.com

Aarschot, Belgium
Tel: +32 16 55 36 00
Fax: +32 16 55 36 74
E-mail: CPG@berryplastics.com

BERRY™
PLASTICS
CORPORATION
AND SUBSIDIARIES
CORROSION PROTECTION GROUP